

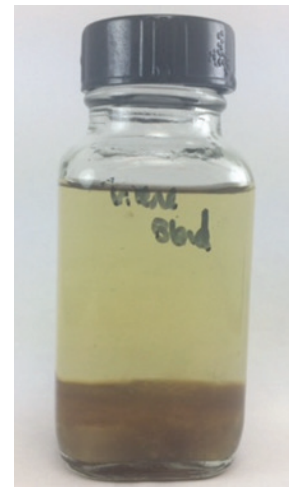
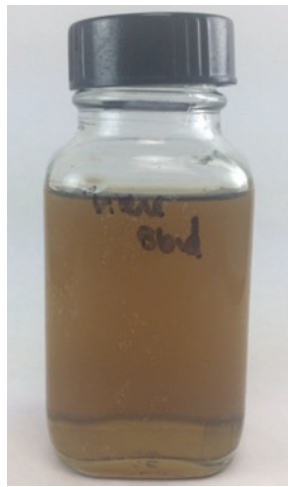
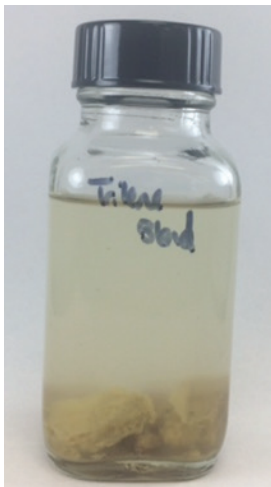
TRILENE

EFFECTIVELY REMOVE WAX AND ASPHALTENE DEPOSITS

Trilene is a highly specialized blend composed of aromatic and aliphatic solvents. The solvent is designed to remove formation damaging wax and asphaltene deposits.

The solvent can be circulated into the wellbore to soak and remove the wax and asphaltene deposits from the wellbore or squeezed into the formation to remove them from the rock matrix. Trilene is often spotted across the deposit or into the formation and allowed to soak for 24 hours. The effectiveness of the solvent can be enhanced by adding anti-sludging agent, non-emulsifiers or wax inhibitors.

Trilene can also be combined in a variety of ratios with Trican's proprietary hydrochloric acid blends as an external or internal phase to aid in the removal of mixed layer organic deposit / inorganic scale deposits.



Trilene dissolving a wax/asphaltene sample (L to R): Initial sample at 80°C; the sample after 15 minutes at 80°C; the sample after four hours at 80°C

ADVANTAGES

- Near optimal mix of aromatic and aliphatic components
- Excellent at dissolving wax, asphaltenes and sludges
- Creates stable mixtures with hydrochloric acid to remove mixed layer organic/inorganic deposits
- Compatible with anti-sludging agent, non-emulsifiers and wax inhibitors
- Disperses residuals after treatment, allowing for efficient flowback

For more information, please contact **Trican Well Service**.